



Epidermal Growth Factor-Like Repeats and Discoidin I-Like Domains 3 is a Novel Regulator of Epithelial-Mesenchymal Transition in Clear Cell Renal Cell Carcinoma: *In Silico* Analysis

Rahşan İlıkçı Sağkan¹, Dilara Fatma Akın Balı²

ABSTRACT

Objective: Epithelial-mesenchymal transition (EMT) contributes to cancer metastasis and recurrence, which are major obstacles in changing the course of cancer. However, studies on the mutational and gene expression profiles of epidermal growth factor-like repeats and discoidin I-like domains 3 (EDIL3) that reveal the relationship between clear cell renal cell carcinoma (ccRCC) and EMT markers are limited. The aim of our study was to reveal the correlation between tumor and EMT markers (E-cadherin and vimentin) and EDIL3 expression. Additionally, we evaluated target gene expression levels and mutational profiles in kidney cancer tissue and normal tissue.

Materials and Methods: We investigated the mutational profile and mRNA expression of EDIL3 and compared them with that of VIM and CDH1 in 523 patients with ccRCC using validated bioinformatics analysis. Additionally, Polymorphism Phenotyping v2 (PolyPhen-2), Screening for NonAcceptable Polymorphisms (SNAP) were used to predict and confirm the pathogenicity of the mutations detected. Studies were performed *in silico* using bioinformatics tools.

Results: EDIL3 and VIM expression was statistically significantly higher in the healthy group and exhibited a positive correlation in patients with ccRCC. Patients with elevated VIM and CDH1 expression and low EDIL3 expression had prolonged survival time. In addition, 7 mutations were detected in the evaluated genes, 6 of which had potential pathogenic features.

Conclusion: Our study provides insights for further experimental studies. EDIL3 can be used as a diagnostic or prognostic indicator of cancer development to help cure renal clear cell cancer.

Keywords: Epidermal growth factor-like repeats and discoidin I-like domains 3, epithelial-mesenchymal transition, clear cell renal cell carcinoma, mutation, gene expression

Cite this article as:
İlıkçı Sağkan R, Akın Balı DF. Epidermal Growth Factor-Like Repeats and Discoidin I-Like Domains 3 is a Novel Regulator of Epithelial-Mesenchymal Transition in Clear Cell Renal Cell Carcinoma: *In Silico* Analysis. Erciyes Med J 2021; 43(2): 122-9.

¹Department of Medical Biology, Uşak University, Faculty of Medicine, Uşak, Turkey

²Department of Medical Biology, Niğde Ömer Hatisdemir University, Faculty of Medicine, Niğde, Turkey

Submitted
24.06.2020

Accepted
08.09.2020

Available Online Date
05.02.2021

Correspondence
Rahşan İlıkçı Sağkan,
Uşak University
Faculty of Medicine,
Department of Medical
Biology, Uşak, Turkey
Phone: +90 276 321 21 21
- 4304
e-mail:
rahshan.ilikci@usak.edu.tr

©Copyright 2021 by Erciyes
University Faculty of Medicine -
Available online at
www.erciyesmedj.com

INTRODUCTION

In adults, clear cell renal cell carcinoma (ccRCC) constitutes 3%–4% of cancers and is the most common cancer of the kidney, accounting for approximately 65%–70% of all renal malignancies (1, 2). Cancer progression toward the invasive and metastatic is associated with the reactivation of EMT in renal cancer (3, 4). Acquisition of EMT characteristics involves increased expression of mesenchymal markers, including N-cadherin and vimentin (VIM), and decreased expression of epithelial markers, especially E-cadherin also known cadherin-1 (CDH1). Upregulation of N-cadherin and VIM and downregulation of E-cadherin are hallmarks of EMT, which involves phenotypic alterations, such as loss of cell-cell adhesion and gain of cell migration capabilities (5–7). Additionally, it involves the growth of blood vessels, angiogenesis of the tumor, and migration of abnormal kidney cancer cells.

Developmentally regulated endothelial cell locus 1 (DEL-1), also known as epidermal growth factor-like repeats and discoidin I-like domains 3 (EDIL3), is a glycoprotein associated with the endothelial cell surface and extracellular matrix and is expressed on some tissues during embryogenic development (8). In adults, the expression of EDIL3 is limited to normal tissues except certain types of cancer such as carcinoembryonic antigen (CEA) (9). EDIL3 is a novel angiogenic factor, which plays a role in modulating pathological angiogenesis (10). Moreover, EDIL3 has been shown to induce EMT in many types of tumor tissues (10–14). EDIL3 is overexpressed during the transition from kidney intraepithelial neoplasia to invasive carcinoma and causes a significant increase in proliferation, angiogenesis, invasion, and metastasis (15).

We hypothesized that EDIL3 serves as a small molecule regulator of the EMT program in renal cancer. To identify characteristics of ccRCC due to EDIL3-mediated EMT in cancer progression, tissue samples from patients with ccRCC were evaluated for EMT marker gene expression, including CDH1, VIM, and EDIL3, and their mutational profiles were compared with that of healthy tissue samples. Additionally, survival analysis was performed to evaluate the prognostic significance of EDIL3.

MATERIALS and METHODS

Downloading Patient Data

The cBio Cancer Genomics Portal (<http://cbioportal.org>) hosts more than 40 datasets from The Cancer Genome Atlas Program (TCGA) and other large-scale genomic studies and makes them available for bulk download. The TCGA dataset is a sub-collection of the open-access genomics archive of The cBio Cancer Genomics Portal. For analysis of EDIL3, VIM, and CDH1 mutations, “TCGA, PanCancer Atlas” datasets were selected. Datasets for patients with ccRCC were downloaded on April 2020 from the cBio Cancer Genomics Portal. The “OncoPrint” tab displays a general view of genetic alterations within each sample of studied genes. The characteristic features of these patients were downloaded from the web browser; data are shown in Table 1.

Mutational Analysis of EDIL3, VIM, and CDH1 in Patients with ccRCC

The cBio Cancer Genomics Portal (<http://cbioportal.org>) includes data from National Cancer Institute (NCI) and National Human Genome Research Institute (NHGRI) libraries. Data from approximately 5.000 tumors are available to cancer researchers and in-library users for interactive cancer genomics studies (16).

Possible mutations in EDIL3, VIM, and CDH1 were detected on the web interface for genome sequencing data of 523 patients with ccRCC, which was available in the portal. We analyzed the mutation scale using OncoPrint and Mutation algorithms.

Bioinformatics Analysis for EDIL3, VIM, and CDH1 in Patients with ccRCC

Polymorphism Phenotyping v2 (PolyPhen-2) (<http://genetics.bwh.harvard.edu/pph2>), Screening for NonAcceptable Polymorphisms (SNAP) (<https://www.rostlab.org/services/SNAP/>), and Catalog of Somatic Mutations in Cancer (COSMIC) (<https://cancer.sanger.ac.uk/cosmic>) databases were used to demonstrate the potential pathogenicity of mutations in our target genes, namely EDIL3, VIM, and CDH1. PolyPhen-2, which can be accessed from a web server, predicts the effect of potential mutations on the stability and activity of synthesized proteins. We combined evolutionary and structural information of these potential amino acid substitution mutations. Moreover, it evaluates the functional interpretation of single nucleotide polymorphisms (SNPs), maps coding SNPs to transcripts, extracts annotations of protein sequence and structure information, and constructs conservation profiles. The potential of missense mutations was estimated using a scoring system based on three parameters, including probably damaging, possibly damaging, and benign or unknown, using this program (17). SNAP is a neural network-based online tool. It is a novel sequence aligner and measures synonymous and non-synonymous substitution rates on a set of codon-aligned nucleotide sequences by considering sequence variety. The most important single feature for SNAP software prediction is conservation in a family of related proteins as reflected by PSIC scores. Variants with scores ranging from -100 to 0 and 0 to 100 are predicted to be neutral and effected mutations, respectively (18). The score given by the COSMIC database was used to predict and verify the pathogenic effect of detected mutations. Additionally, the PolyPhen-2 software can be used to evaluate evolutionary conservation of amino acid mutations across species using the “Multiple sequence alignment” tool.

Analysis of EDIL3, VIM, and CDH1 mRNA Expression in Patients with ccRCC

GEPIA (<http://gepia.cancer-pku.cn/index.html>) is a new interactive web server for analyzing RNA sequencing expression data from 9.736 tumors and 8.587 normal samples from the TCGA and GTEx projects using a standard processing pipeline. This advanced web server can be used for various applications, including transcript expression analysis, profiling based on cancer types or pathological stages, dimensionality reduction, analogous gene detection, correlation analysis, and overall survival analysis (19). Levels of EDIL3, VIM, and CDH1 mRNA from 523 patients with ccRCC and 100 normal tissue were represented as box-plot graphs using the GEPIA database. Transcripts per million (TPM) was used to quantify mRNA expression. Gene expression data were first \log_2 (TPM+1) transformed for differential analysis and \log_2 FC was defined as median (tumor tissue) – median (normal tissue). Genes with higher $[\log_2$ FC] values and lower q values than pre-set thresholds were considered differentially expressed genes.

Analyses of correlation between the expression of EDIL3 and other target genes were performed and p-values were obtained through this web server. Finally, survival analyses of target genes, including EDIL3, VIM, and CDH1, based on change in expression were carried out using the software.

Statistical Analysis

Statistical analyses for data evaluation were performed using the GEPIA database. One-way ANOVA was performed for differential analysis, using the disease state (tumor or normal) as a variable for evaluating differential gene expression. Overall survival analysis was carried out using Kaplan–Meier curves. The logrank test was used for comparing the low and high expression groups. Correlation analysis was performed using Pearson’s correlation test using the electronically connected database. A value of $p < 0.05$ was considered statistically significant.

RESULTS

Results of Mutation Analysis for EDIL3, VIM, and CDH1 in Patients with ccRCC

To detect genetic alterations in EDIL3, VIM, and CDH1 in ccRCC samples, genome sequencing data of 523 patients with ccRCC were examined through the cBioPortal interface. A total of 1.9% of patients with ccRCC had 7 mutations, namely 4 missense, 1 nonsense, and 2 frame shifts, in EDIL3, VIM, and CDH1. Detailed information on detected mutations is summarized in Table 2. EDIL3 was the most frequently mutated, with a 1.3% change. The nonsense p.G185* mutation created a termination codon at amino acid 185 of EDIL3, leading to the formation of a truncated protein (Fig. 1). Frameshift mutations p.I289Hfs*27 and p.P127Afs*41, which were detected in EDIL3 and CDH1, respectively, shifted the reading frame, leading to the formation of truncated proteins. As presented in Figure 2, all detected mutations in EDIL3 are present on protein domains encoded by the gene. The p.N315S missense mutation in CDH1 is located in an extracellular region. However, the p.P127Afs*41 frame-shift change is on a location that may leads to the early terminated protein formation at such a level, which can impact the synthe-

Table 1. Demographic, clinical and genetic data of patients with clear cell renal cell carcinoma (ccRCC)

Characteristic	Patient data n=523		Characteristic	Patient data n=523	
	n	%		n	%
Gender			Stage IV	83	15.8
Male/Female/NA	326/186/11		NA	11	2.1
Diagnosis age, years	60 (range, 29–90)		Tumor stage code		
Race category			T1	16	3
White	442	84.5	T1a	127	24.2
Black or African American	55	10.5	T1b	103	19.6
Asian	8	1.5	T3	3	0.5
NA	18	3.4	T3a	117	22.3
Sample type			T3b	51	9.7
Primary	512	97.8	T3c	2	0.3
NA	11	2.1	T2	48	9.1
Overall survival status			T2a	9	1.7
Living	353	67.4	T2b	4	0.7
Deceased	170	32.5	T4	7	1.3
Overall Survival (months)-median	6.11		NA	36	6.8
Metastasis stage code			Alteration Frequency in ccRCC	Case	Frequency %
M0	403	77	EDIL3 Mutation	4	1.13
MX	29	5.5	EDIL3 Amplification	0	0
M1	78	14.9	EDIL3 Deep deletion	0	0
M1a	–	–	VIM Mutation	1	0.28
M1b	–	–	VIM Amplification	0	0
NA	13	2.4	VIM Deep deletion	0	0
Neoplasm disease stage cancer code			CDH1 Mutation	1	0.28
Stage I	249	47.6	CDH1 Amplification	0	0
Stage II	54	10.3	CDH1 Deep deletion	0	0
Stage III	126	24			

MX: Distant metastasis cannot be assessed; M0: No distant metastasis; M1: Distant metastasis; M1a: Distant metastasis to lung on opposite side of the primary tumor, pleural lymph nodes or malignant or pericardial effusion; M1b: Distant metastasis; NA: Not applicable

sis, placement and function of the protein of E-cadherin. The p.L380F missense mutation in VIM is located on the filament domain. All mutations were saved as somatic mutations in the COSMIC database. Domain architecture of proteins and mutations found in ccRCC are shown in Figure 2.

Results of Bioinformatics Analysis for EDIL3, VIM, and CDH1 in Patients with ccRCC

PolyPhen-2 analysis revealed that 6 of 7 missense mutations detected, which are presented in detail in Table 1, might pathogenically be Probably Damaging because their score is close to 1. However, 3 of 4 missense mutations, which were detected using SNAP analysis, were determined as being affected because their scores ranged from 0 to 100.

We compared amino acid substitutions caused by missense mutations in different species using the “Multiple sequence alignment” option, which is included in the PolyPhen-2 program. Our findings revealed that p.Q187R, p.T343M, and p.L380F in EDIL3

were present at critically important locations and were evolutionarily conserved across species. Predicted pathogenic characteristics and evaluations of evolutionary conservation, which were carried out using the PolyPhen-2 software, are shown in Figure 3a–d. However, the p.N315S missense change in CDH1 was identified as “benign” and thus, is not at a critical localization in the evolutionary process (Fig. 4).

Analysis of EDIL3, VIM, and CDH1 mRNA Expression in Patients with ccRCC

We compared EDIL3, VIM, and CDH1 mRNA expression profiles of 523 patients with ccRCC with that of 100 healthy samples. Levels of EDIL3 and VIM mRNA were found to be considerably higher in patients with ccRCC when compared to samples from healthy individuals. However, the level of CDH1 mRNA was high in the healthy sample group. Analysis of expression profiles of all three genes revealed statistical significance among study groups (Fig. 4a, $p < 0.05$). Analysis of the

Table 2. Epidermal growth factor-like repeats and discoitin I-like domains 3 (EDIL3), vimentin (VIM), and cadherin-1 (CDH1) mutations in patients with clear cell renal cell carcinoma (ccRCC)

No	Gene	Nt alteration	Rs number	Alteration type	Localization	AA position	Previously determined disease	Clinical characteristics of patients with the mutation	Clinical significance		
									Poly-Phen2 (score)	SNAP (score)	COSMIC prediction
M-1	EDIL3	c.559C>A	COSV56902716	Missense mutation	F5_F8 Type C	p.Q187R	ccRCC	M1 Deceased T4 Overall survival months: 5	Probably Damaging (score 1.00)	Effect (17)	Pathogenic (score 0.99)
M-2	EDIL3	c.1028C>T	COSV56879041	Missense mutation	F5_F8 Type C	p.T343M	ccRCC	M0 Living T3A Overall survival months: 3	Probably Damaging (score 0.98)	Effect (56)	Pathogenic (score 0.99)
M-3	EDIL3	c.553G>T	COSV56908142	Nonsense mutation	F5_F8 Type C	p.G185*	ccRCC	M1 Deceased T1B Overall survival months: 10	Probably Damaging (score 1.00)	-	Pathogenic (score 0.98)
M-4	EDIL3	c.865ins	N/A	Frame Shift mutation	F5_F8 Type C	p.I289His*27	ccRCC	M0 Living T2 Overall survival months: 49	Probably Damaging (score 1.00)		N/A
M-5	VIM	c.1138C>T	COSV56407096	Missense mutation	Filament	p.L380F	ccRCC	M0 Living T2 Overall survival months: 83	Probably Damaging (score 1.00)	Effect (23)	Pathogenic (score 0.94)
M-6	CDH1	c.377dup (Insertion)	COSV55727472	Frame Shift mutation	PRE	p.P127Afs*41	ccRCC	M1 Deceased T1B Overall survival months: 43	Probably Damaging (score 1.00)	-	N/A
M-7	CDH1	c.944A>G	COSV55727472	Missense mutation	Cadherin	p.N315S	ccRCC	M0 Living T3b Overall survival months: 129	Benign (0.00)	Neutral (-65)	Neutral (score 0.17)

M: Mutation; COSV: The genomic mutation identifier; PRE: Precursor peptiti; ccRCC: Clear cell renal cell carcinoma; M0: No distant metastasis; M1: Distant metastasis; T: Describes the size of the tumor; N/A: Not available

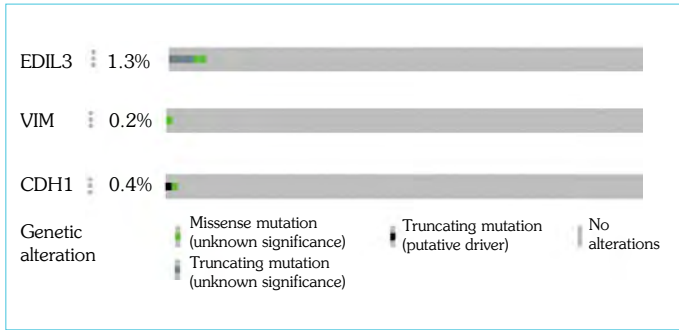


Figure 1. Distribution of mutations in epidermal growth factor-like repeats and discoidin I-like domains 3 (EDIL3), vimentin (VIM), and cadherin-1 (CDH1) in clear cell renal cell carcinoma (ccRCC)

relationship between expression profiles of VIM and CDH1 and that of EDIL3 independently using Pearson's correlation test revealed a positive correlation between VIM and EDIL3 expression (Fig. 4b, $r=0.31$). Results from survival analysis revealed that overall survival times and disease-free survival times of patients with ccRCC with low EDIL3 were longer than those with high EDIL3 (Fig. 5a). Patients with ccRCC and high VIM and CDH1 expression had longer survival, which was statistically significant, than those with low expression levels (Fig. 5b, c). Details of overall survival data of 7 patients with ccRCC are not available from the data server. Therefore, the overall survival graphs were constructed by reducing the sample size from 523 to 516 patients with ccRCC.

DISCUSSION

EMT plays a critical role in tumorigenesis (5, 6, 20). EDIL3, a potent stimulator of EMT, has been shown to have important roles in various biological mechanisms (21). Targeting this small mediator may be a novel therapeutic strategy for antitumor treatment in renal cancer. Studies on the prognostic significance of EDIL3 and its role in EMT are limited. A study evaluated the prognostic significance of EDIL3 expression and demonstrated the relationship between EDIL3 and EMT in lung adenocarcinoma (22). Our *in silico* analysis results support this data. EDIL3-high positive patients had lower survival rates than did EDIL3-low positive or negative patients. This status may indicate the prognostic significance of EDIL3 expression. Furthermore, our findings suggest that the increased expression of EDIL3 in malignant tissue during the transition from epithelial to invasive mesenchymal features is associated with the EMT phenotype. EDIL3 expression correlated with levels of CDH1 and VIM expression. Based on these findings, EDIL3 is an important target for the treatment of ccRCC. A study confirmed that EDIL3 expression can support characteristics of EMT, in terms of decreasing E-cadherin and increasing vimentin expression in patients with lung cancer (22).

Although an association between EDIL3 expression and the EMT program has been observed in several cancer types (11, 21, 22), no study has examined mutational profiles of EDIL3, VIM, and CDH1 and their expression patterns in patients with ccRCC. First, we evaluated mutational profiles of EDIL3, VIM, and CDH1 from genome sequencing data, which are available in TCGA datasets, of 523 patients with ccRCC. The mutation ratio was 1.9% in the

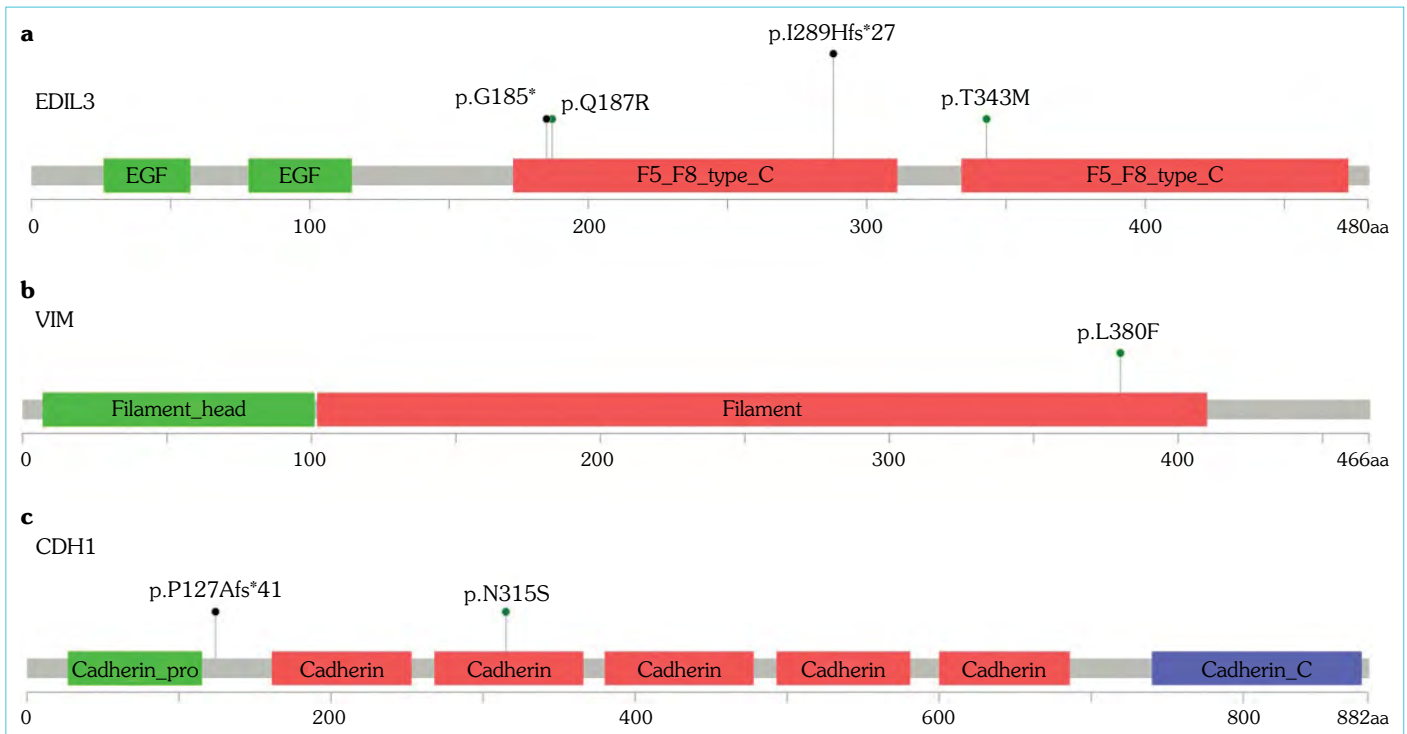


Figure 2. Schematic representation of the domain architecture of epidermal growth factor-like repeats and discoidin I-like domains 3 (EDIL3), vimentin (VIM), and cadherin-1 (CDH1) and mutations in patients with clear cell renal cell carcinoma (ccRCC). (a) Human EDIL3 is a polypeptide of 480 amino acids. (b) Human VIM is a polypeptide of 466 amino acids (c) Human CDH1 is a polypeptide of 882 amino acids

EGF: Epidermal growth factor

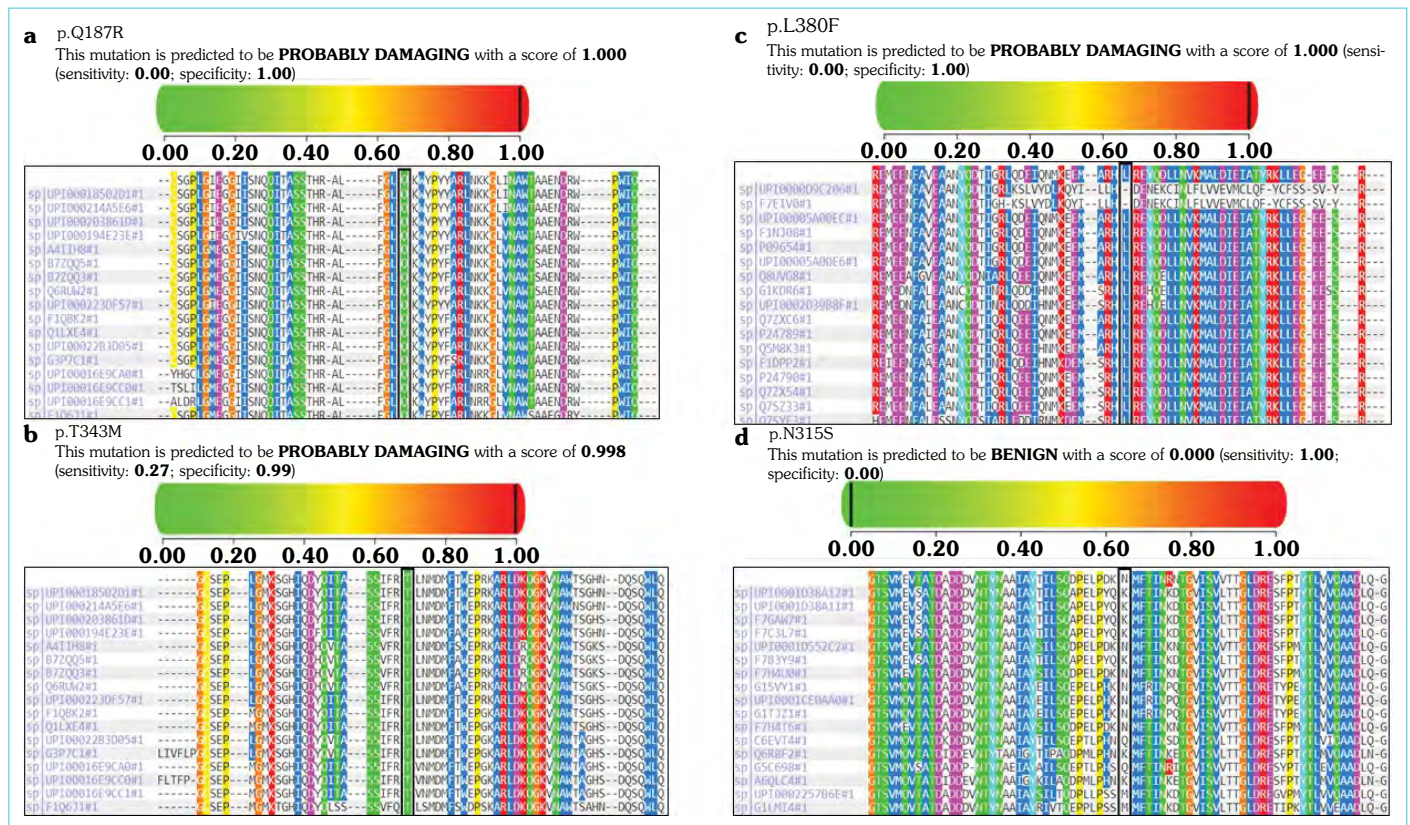


Figure 3. Functional effects of epidermal growth factor-like repeats and discoidin I-like domains 3 (EDIL3), vimentin (VIM), and cadherin-1 (CDH1) mutations were evaluated using the Polymorphism Phenotyping v2 (PolyPhen-2) program. Evolutionary conservation analyses of mutated amino acids in EDIL3, VIM, and CDH1. Mutated amino acids are demonstrated. The detected mutant amino acids were evaluated across species

ccRCC patient group, with EDIL3 being the most mutated gene at 1.3%. Mutations were detected in the genes studied, especially in sequences encoding important domains. Results from evolutionary analysis across species revealed that p.Q187R, p.T343M in EDIL3 and the p.L380F missense mutation in VIM were evolutionarily conserved. In addition, according to functional potential pathogenic effect analysis, we determined that it may cause the formation of impaired or unstable EDIL3 and VIM. Mutations in the three genes were recorded as somatic mutations in the COSMIC database. The p.G185* nonsense mutation in EDIL3 is a truncating mutation, which leads to the creation of a stop codon. We believe that this mutation is of clinical significance. We detected p.I289Hfs*27 and p.P127Afs*41 frame-shift mutations in EDIL3 and CDH1, respectively. Studies have reported that frame-shift mutations in CDH1 lead to the development of diffuse stomach cancer (23, 24). E-cadherin, which is encoded by CDH1, is a glycoprotein found in the epithelium of all mammals. E-cadherin belongs to the family of the cell adhesion molecules and is the first identified member of this family. The intracellular domain of E-cadherin consists of 151 amino acids and is linked to the intracellular actin skeleton through α -, β -, and γ -catenin. The extracellular domain of E-cadherin comprises 554 amino acids and communicates with molecules of neighboring E-cadherin (23, 24, 25). The p.P127Afs*41 mutation arises when incomplete synthesis of the extracellular portion of the protein occurs. We believe that this causes protein function disruption. Therefore, the bioinformatics-based design of our study is the limitation of our study.

Results from bioinformatics analysis should be considered in the light of some limitations. The limitation concerns the lack of experimental study. Demographic statistics, including gender, race, age, and survival status, of healthy individuals were not available in the database, which is a statistically limiting factor in our bioinformatics study. However, our study has some strengths. Systematic cancer genomic projects, including TCGA, enabled the analysis of specific tumor types. Identification of disease-specific loci has led to the discovery of oncogenes, identification of molecular subtypes of tumors, and discovery of biomarkers based on transcriptomic, proteomics, and epigenomic changes. Studies on mutations in regions can provide valuable information.

In conclusion, our findings suggest that EDIL3 is a novel molecule associated with the EMT phenotype and can be a novel target in ccRCC. A large-scale wet-lab study is warranted to elucidate the roles of EDIL3, VIM, and CAD in ccRCC for discovering drugs for renal cancer.

Acknowledgements: The data used in our study are obtained from public database the TCGA Research Network: <https://www.cancer.gov/tcga>. We thank the TCGA and GEPIA databases for the availability of the data.

Peer-review: Externally peer-reviewed.

Author Contributions: Concept – RIS; Design – RIS, DFAB; Supervision – RIS, DFAB; Data Collection and/or Processing – RIS, DFAB; Analysis and/or Interpretation – RIS, DFAB; Literature Search – RIS, DFAB; Writing – RIS, DFAB; Critical Reviews – RIS.

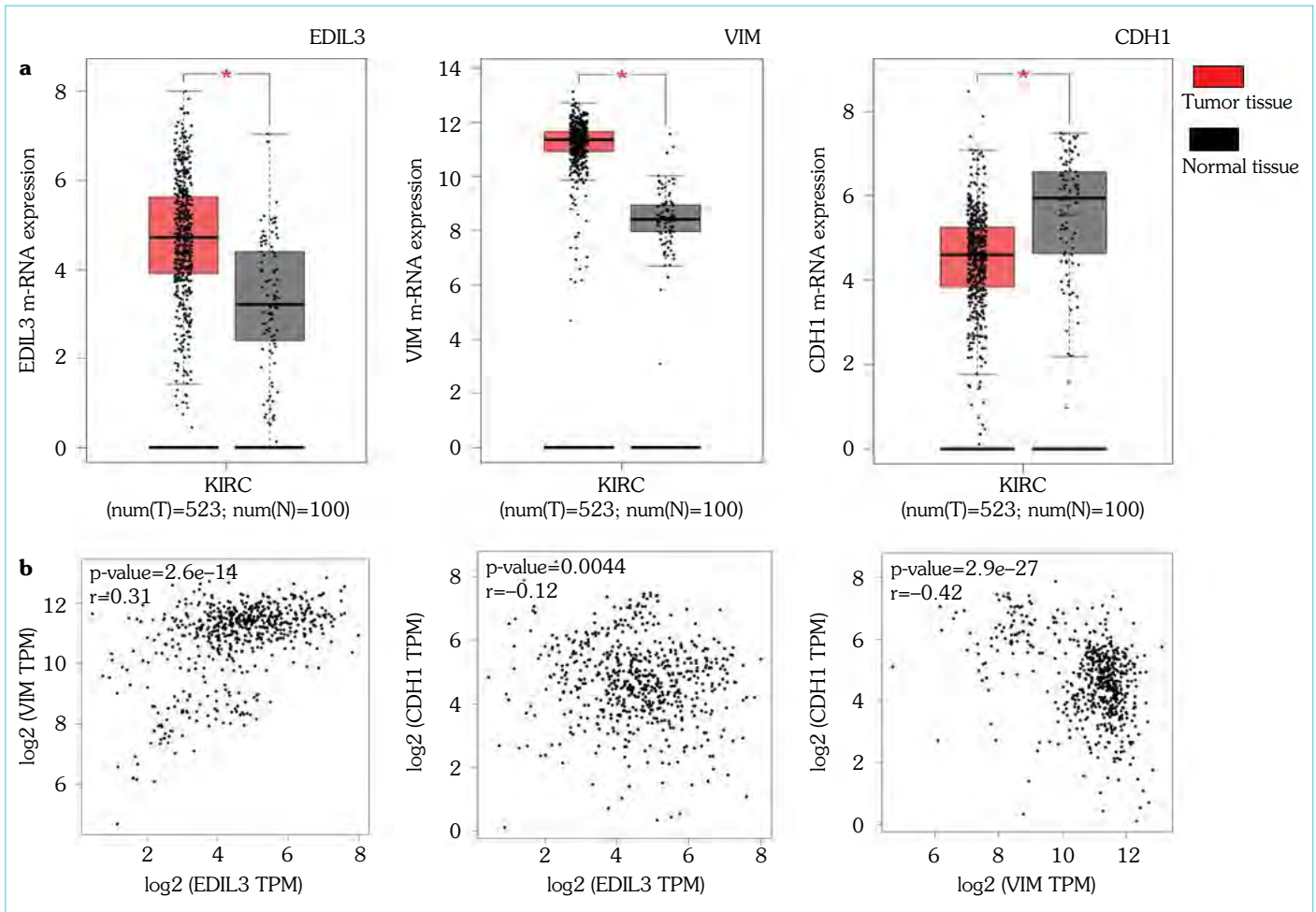


Figure 4. Validation of mRNA expression levels of (a) epidermal growth factor-like repeats and discoidin I-like domains 3 (EDIL3), vimentin (VIM), and cadherin-1 (CDH1) in clear cell renal cell carcinoma (ccRCC) tissues and normal tissues using GEPIA. The four box plots are based on 523 ccRCC samples (red) and 100 normal samples (black), KIRC: Kidney renal clear cell carcinoma. (b) Pearson's correlation analyses of VIM and CDH1 mRNA expression with that of EDIL3 (*indicates $p < 0.05$)

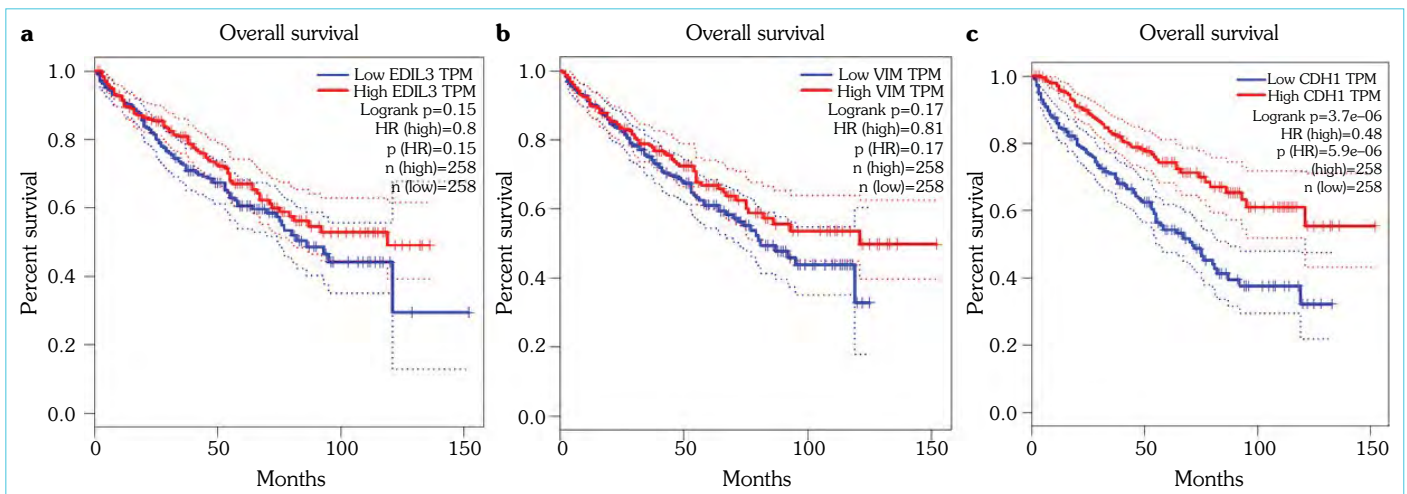


Figure 5. Kaplan-Meier survival analysis conducted with high and low mRNA expression of (a) epidermal growth factor-like repeats and discoidin I-like domains 3 (EDIL3), (b) vimentin (VIM), and (c) cadherin-1 (CDH1) regarding their association with overall survival in 523 patients with clear cell renal cell carcinoma (ccRCC). Data are presented as hazard ratio with 95% confidence interval. Logrank $p < 0.01$ was considered statistically significant. (n: Sample size; logrank: Mantel-Cox test; HR (high): Hazard Ratio; p-value (hazard ratio)

TPM: Transcripts per million

Conflict of Interest: The authors have no conflict of interest to declare.

Financial Disclosure: The authors declared that this study has received no financial support.

REFERENCES

- Spadaccino F, Netti GS, Rocchetti MT, Castellano G, Stallone G, Ranieri E. [Article in Italian]. *G Ital Nefrol* 2020; 37(2): 2020–vol2.
- Capitanio U, Bensalah K, Bex A, Boorjian SA, Bray F, Coleman J, et al. Epidemiology of Renal Cell Carcinoma. *Eur Urol* 2019; 75(1): 74–84. [CrossRef]
- Piva F, Giulietti M, Santoni M, Occhipinti G, Scarpelli M, Lopez-Beltran A, et al. Epithelial to Mesenchymal Transition in Renal Cell Carcinoma: Implications for Cancer Therapy. *Mol Diagn Ther* 2016; 20(2): 111–7. [CrossRef]
- He H, Magi-Galluzzi C. Epithelial-to-mesenchymal transition in renal neoplasms. *Adv Anat Pathol* 2014; 21(3): 174–80. [CrossRef]
- Loh CY, Chai JY, Tang TF, Wong WF, Sethi G, Shanmugam MK, et al. The E-Cadherin and N-Cadherin Switch in Epithelial-to-Mesenchymal Transition: Signaling, Therapeutic Implications, and Challenges. *Cells* 2019; 8(10): 1118. [CrossRef]
- Feng YL, Chen DQ, Vaziri ND, Guo Y, Zhao YY. Small molecule inhibitors of epithelial-mesenchymal transition for the treatment of cancer and fibrosis. *Med Res Rev* 2020; 40(1): 54–78. [CrossRef]
- Parsana P, Amend SR, Hernandez J, Pienta KJ, Battle A. Identifying global expression patterns and key regulators in epithelial to mesenchymal transition through multi-study integration. *BMC Cancer* 2017; 17(1): 447. [CrossRef]
- Jiang SH, Wang Y, Yang JY, Li J, Feng MX, Wang YH, et al. Overexpressed EDIL3 predicts poor prognosis and promotes anchorage-independent tumor growth in human pancreatic cancer. *Oncotarget* 2016; 7(4): 4226–40. [CrossRef]
- Zhang R, Wei YH, Zhao CY, Song HY, Shen N, Cui X, et al. EDIL3 depletion suppress epithelial-mesenchymal transition of lens epithelial cells via transforming growth factor β pathway. *Int J Ophthalmol* 2018; 11(1): 18–24.
- Sun JC, Liang XT, Pan K, Wang H, Zhao JJ, Li JJ, et al. High expression level of EDIL3 in HCC predicts poor prognosis of HCC patients. *World J Gastroenterol* 2010; 16(36): 4611–5. [CrossRef]
- Lee SH, Kim DY, Jing F, Kim H, Yun CO, Han DJ, Choi EY. Del-1 overexpression potentiates lung cancer cell proliferation and invasion. *Biochem Biophys Res Commun* 2015; 468(1-2): 92–8. [CrossRef]
- Lee SJ, Lee J, Kim WW, Jung JH, Park HY, Park JY, et al. Del-1 Expression as a Potential Biomarker in Triple-Negative Early Breast Cancer. *Oncology* 2018; 94(4): 243–56. [CrossRef]
- Zou X, Qiao H, Jiang X, Dong X, Jiang H, Sun X. Downregulation of developmentally regulated endothelial cell locus-1 inhibits the growth of colon cancer. *J Biomed Sci* 2009; 16(1): 33. [CrossRef]
- Oplawski M, Dziobek K, Zmarzly N, Grabarek B, Tomala B, Leśniak E, et al. Evaluation of Changes in the Expression Pattern of EDIL3 in Different Grades of Endometrial Cancer. *Curr Pharm Biotechnol* 2019; 20(6): 483–8. [CrossRef]
- Hsieh JJ, Purdue MP, Signoretti S, Swanton C, Albiges L, Schmidinger M, et al. Renal cell carcinoma. *Nat Rev Dis Primers* 2017; 3: 17009.
- Cerami E, Gao J, Dogrusoz U, Gross BE, Sumer SO, Aksoy BA, et al. The cBio cancer genomics portal: an open platform for exploring multidimensional cancer genomics data. *Cancer Discov* 2012; 2(5): 401–4. Erratum in: *Cancer Discov* 2012; 2(10): 960. [CrossRef]
- Adzhubei I, Jordan DM, Sunyaev SR. Predicting functional effect of human missense mutations using PolyPhen-2. *Curr Protoc Hum Genet* 2013; Chapter 7: Unit 7.20. [CrossRef]
- Bromberg Y, Rost B. SNAP: predict effect of non-synonymous polymorphisms on function. *Nucleic Acids Res* 2007; 35(11): 3823–35.
- Tang Z, Li C, Kang B, Gao G, Li C, Zhang Z. GEPIA: a web server for cancer and normal gene expression profiling and interactive analyses. *Nucleic Acids Res* 2017; 45(W1): W98–102. [CrossRef]
- Fedele M, Cerchia L, Chiappetta G. The Epithelial-to-Mesenchymal Transition in Breast Cancer: Focus on Basal-Like Carcinomas. *Cancers (Basel)* 2017; 9(10): 134. [CrossRef]
- Gasca J, Flores ML, Jiménez-Guerrero R, Sáez ME, Barragán I, Ruiz-Borrego M, et al. EDIL3 promotes epithelial-mesenchymal transition and paclitaxel resistance through its interaction with integrin $\alpha V\beta 3$ in cancer cells. *Cell Death Discov* 2020; 16(6): 86. [CrossRef]
- Jeong D, Ban S, Oh S, Jin Lee S, Yong Park S, Koh YW. Prognostic Significance of EDIL3 Expression and Correlation with Mesenchymal Phenotype and Microvessel Density in Lung Adenocarcinoma. *Sci Rep* 2017; 7(1): 8649. [CrossRef]
- Bustos-Carpinteyro AR, Oliveira C, Sousa A, Oliveira P, Pinheiro H, Carvalho J, et al. CDH1 somatic alterations in Mexican patients with diffuse and mixed sporadic gastric cancer. *BMC Cancer* 2019; 19(1): 69.
- Selvanathan A, Nixon CY, Zhu Y, Scietti L, Forneris F, Uribe LMM, et al. CDH1 Mutation Distribution and Type Suggests Genetic Differences between the Etiology of Orofacial Clefting and Gastric Cancer. *Genes (Basel)* 2020; 11(4): 391. [CrossRef]
- Paredes J, Figueiredo J, Albergaria A, Oliveira P, Carvalho J, Ribeiro AS, et al. Epithelial E- and P-cadherins: role and clinical significance in cancer. *Biochim Biophys Acta* 2012; 1826(2): 297–311. [CrossRef]